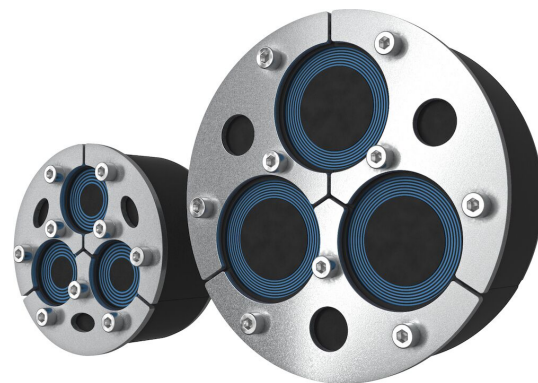




Bague Roxtec H3 UG™

Passages pour câbles entrant via des fondations.

La bague Roxtec H3 UG™ est idéale pour les câbles entrant via des fondations. Elle constitue une barrière durable contre les inondations, le gaz, l'humidité et les rongeurs. C'est une bague composée de trois parties et elle est facile à installer même dans des environnements humides avec des écoulements d'eau. Le passage résiste aux courbures extrêmes des câbles et possède une tolérance de +3 mm vis-à-vis de l'ouverture, ainsi qu'un indicateur qui vous prévient quand la compression est atteinte. La bague peut être installée dans des douilles, des fourreaux et des carottages.



- Résistant aux rongeurs
- Installation facile et rapide
- Assure un excellent maintien des câbles

Caractéristiques du produit



Étanche à l'eau



Étanche au gaz



IP/UL NEMA

Structure d'installation



Béton

Type de fixation



Trou existant



Douille existante

Classements et certificats

Étanchéité

- Gaz: 0,3 bars (constant)
- Eau: 0,3 bars (constant)
- IP 68

Éléments d'étanchéité

Éléments d'étanchéité



Bague H3 UG™



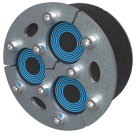
Lubrifiant Roxtec

Pour plus d'informations, veuillez consulter [roxtec.com](https://www.roxtec.com).

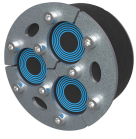


Kits de passage préconfigurés

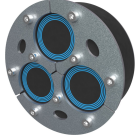
mm/kg



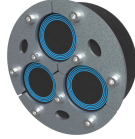
H3-135 UG



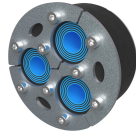
H3-150 UG



H3-185 UG



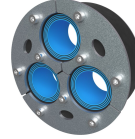
H3-200 UG



H3-135 UG WOC



H3-150 UG WOC



H3-185 UG WOC

Titre	Configuration	Dimensions d'ouverture Ø	Poids	N° art.
H3-135 UG	3x (23.0-43.0)	135 - 138	2.2	126281
H3-150 UG	3x (24.0-52.0)	150 - 153	2.5	151561
H3-185 UG	3x (48.0-64.0)	185 - 188	3.9	126283
H3-200 UG	3x (48.0-68.0)	200 - 203	4.3	117842
H3-135 UG WOC	3x (23.0-43.0)	135 - 138	2.3	151306
H3-150 UG WOC	3x (24.0-52.0)	150 - 153	2.6	155188
H3-185 UG WOC	3x (48.0-64.0)	185 - 188	3.5	151308
H3-200 UG WOC	3x (48.0-68.0)	200 - 203	4	108697
H3-150 UG INSERTABLE	3x (24.0-52.0)	150 - 153	2.6	155189
H3-200 UG INSERTABLE	3x (48.0-68.0)	200 - 203	4.4	127053
H3-150 UG INSERTABLE WOC	3x (24.0-52.0)	150 - 153	2.3	166396
H3-200 UG INSERTABLE WOC	3x (48.0-68.0)	200 - 203	3.7	164807

The product information provided by Roxtec does not release the purchaser of the Roxtec system, or part thereof, from the obligation to independently determine the suitability of the products for the intended process, installation and/or use.

Roxtec gives no guarantee for the Roxtec system or any part thereof and assumes no liability for any loss or damage whatsoever, whether direct, indirect, consequential, loss of profit or otherwise, occurred or caused by the Roxtec systems or installations containing components not manufactured by an authorized manufacturer and/or occurred or caused by the use of the Roxtec system in a manner or for an application other than for which the Roxtec system was designed or intended.

Roxtec expressly excludes any implied warranties of merchantability and fitness for a particular purpose and all other express or implied representations and warranties provided by statute or common law. User determines suitability of the Roxtec system for intended use and assumes all risk and liability in connection therewith. In no event shall Roxtec be liable for indirect, consequential, punitive, special, exemplary or incidental damages or losses.

The Roxtec products are offered and sold in accordance with the conditions of the Roxtec General Terms of Sales. The latest version of the Roxtec General Terms of Sales can be downloaded from <https://www.roxtec.com/en/about-us/about-roxtec/general-terms-of-sales/>

We reserve the right to make changes to the product and technical information without further notice. Any errors in print or entry are no claims for indemnity. The content of this publication is the property of Roxtec International AB and is protected by copyright.

This document was generated on: 2024-04-10